

사업의 개요 Business Outline

Purpose

- Sanitary Disposal for Daily Wastes and Secured Facility for a Long Period of Time
- Waste Heat Energy Recovery And Reduce Greenhouse Gas From All the Combustion Wastes Incineration
- Maximize Period Of Landfill Reduce Wastes For Landfill
- Continued Unified Management to Procure and Wastes Disposal for The Incineration And Landfill
- Reduce The Management Cost of Landfill For Fly Ash

Our Promise To Maintain An Eco-Friendly Wastes Disposal

1 From Occurring to Minimal Wastes

To Encourage Separate Collection And Reduce Refusal Through Volume Rate Garbage Disposal System. It Enforces the Reduction of Disposable Products. Take Control of Overpackaging and Actively Induce Food Refusal that Promotes Energy Resources and Recovery

2 Encourage Recycling Through Occuring Wastes and Exhaustive Separate Collection

Exhaustive Use of Recyclable Wastes, Food Waste, Volume-rate Garbage Disposal Bag to be Recycled as Resources

3 REcycle the Remaining Combustible Wastes for Incineration Resources

Perfectly Remove Contaminants From Incineration for Optimum Air Pollution Prevention. to Use Alternative Energy That Reduces Greenhouse Gas Though Combustible Wastes Incineration Waste Heat Collection

Business Outline

• **Location** : 524, Cheoyong-ro, Nam-gu, Ulsan

• **Incineration** : Landfill Facility 402,000m²,
Incinerator 11,000m²

[Incinerator]

- incinerator : 650ton/day
 - Existing Incinerator : 200ton/day × 2
 - Additional Incinerator : 250ton/day × 1
- Method Of Incineration : Continuous Stoker
- Produce Steam : 70톤/hr (Existing 35, Additional 35)

[Landfill Facility]

- Landfill for Daily Wastes(1st phase)
 - Area : 144,100m² (Capacity : 2,480,000m³)
- Landfill for Fly Ash
 - Area : 14,400m² (Capacity : 135,000m³)
- Landfill Process : semi-aerobic sanitary landfill (cell process)

[Other, Facilities]

- produce steam supply facility, leachate treatment facility, Car washing facility

• **Concessionaire** : ULSAN GREEN Co.,LTD

• **construction company** :
GS Construction Co.,LTD,
Hanwha Engineering & Construction Co.,LTD,
Halla Energy & Environment Co.,LTD,
Nam Guk General Construction Co.,LTD

• **Superintendent** : Dohwa Engineering Co.,LTD,
Han Sin Engineering Co.,LTD



Ulsan Metropolitan City Environmental Energy Town



Wastes to Resources Resources to Energy

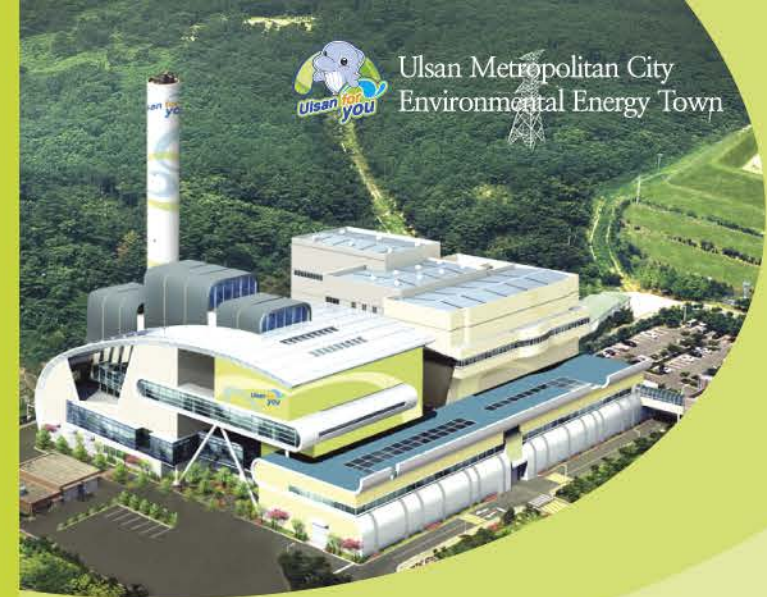
Ulsan dreams of becoming world's best masterpiece in Eco-polis city. We are doing our best to maintain low carbon and green growth with advanced base resources

Everyone's participation on separate garbage collection

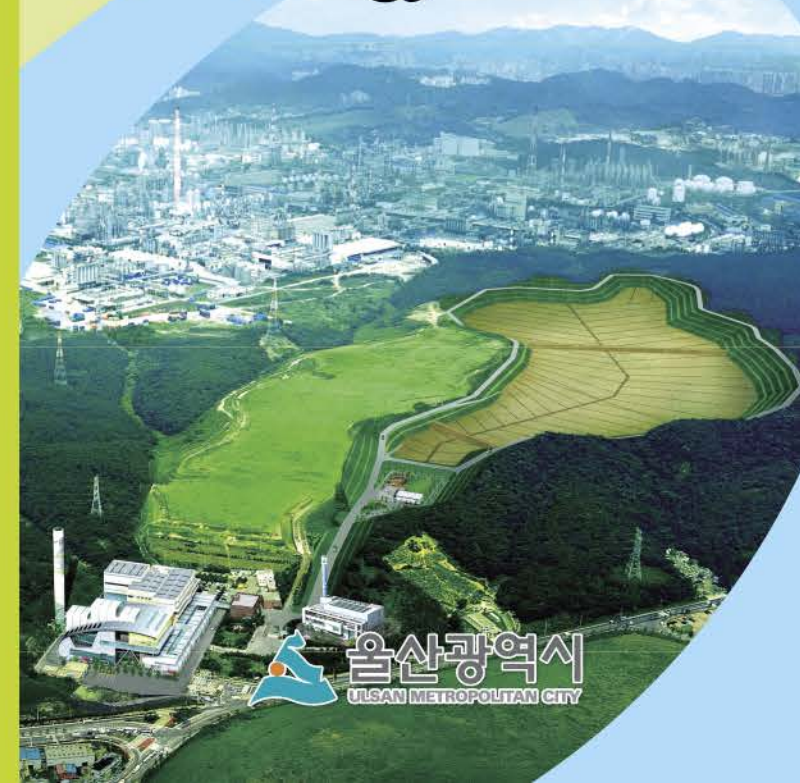
For effective and functional incineration, bottles, cans, steel, food wastes and other forms of garbage materials should be separated properly, if not, the incineration units will have difficulty in handling optimal conditions. The first and foremost way to preservation and creating a Global Environment is recycling resources and separating of exhaustive materials through the use of landfill extension.



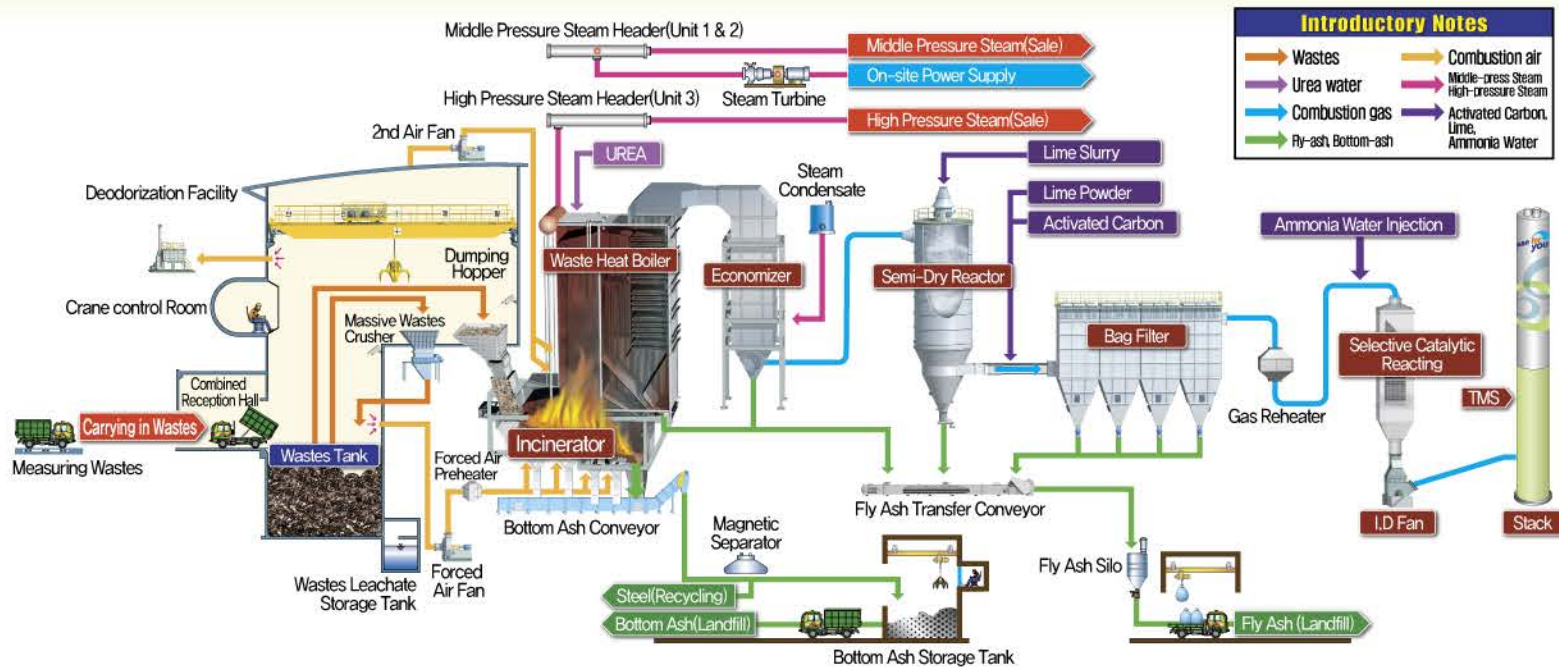
524, Cheoyong-ro, Nam-gu, Ulsan
TEL. +82-52-229-3240~2



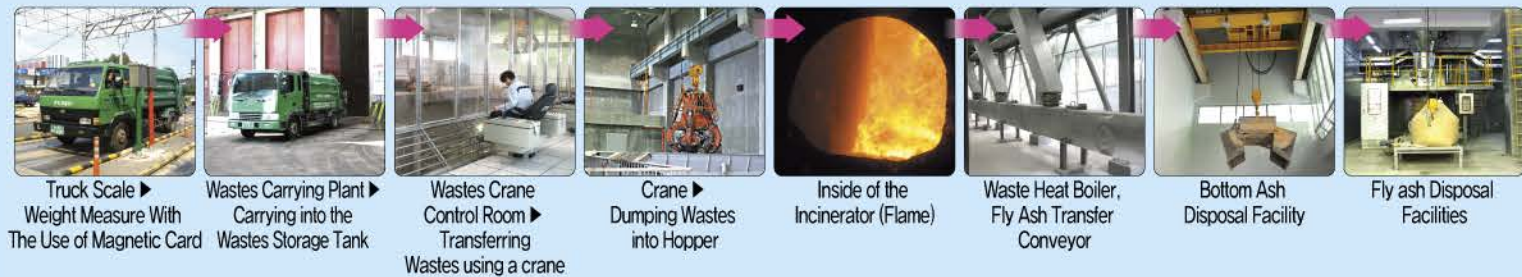
Ulsan Metropolitan City, the Environmental Energy Town



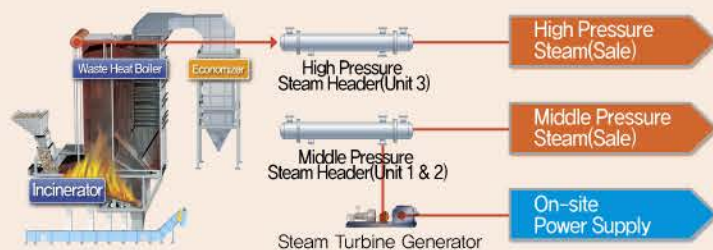
소각처리시설 계통도 Incineration Flow Diagram



반입/소각설비 & 재처리 바닥재 처리설비 Waste Carrying and Incinerating Plant & Fly Ash & Bottom Ash Disposal Facility



폐열이용설비 Waste Heat Utilization Facility



Effect of Utilization for Waste Heat

We use heats occurred by incinerating for the air conditioning and heating system inside of the incinerator, and supply the whole remaining steam to the nearby companies. As a result, all these processes can make greenhouse gas emissions decreased.

환경오염 방지시설 Environmental Pollution Prevention Facility

Combustion Gas Treatment Facility

De NOx facility(SNCR, SCR)
As urea is directly injected into the incinerator, this facility makes nitrogen-oxide changed into nitrogen and water, and removed.

Semi-Dry Reactor(SCR)
This facility makes contaminated substances occurred during incinerating process such as the main contaminant, (SOx, HCl, HF) removed.

Activated Carbon Spray Equipment
Inclusion of Combustion Gas Dioxin/Furan Toxic Organic Compounds Removal for Activated Carbon Spray equipment

Bag Filter
Inside a Square Airtight Container Filter Bag is Installed a Dust Container Combustion and Air Passes Through the Filter Bag That Separates Dust and Gas Then Release the Clean air

Pollutants Monitoring/Measure Facility

Combustion Gas Monitoring System

Air Pollutants Discharge Present Condition Electronic Display

Laboratory

Deodorization / Waste Water Treatment Facility

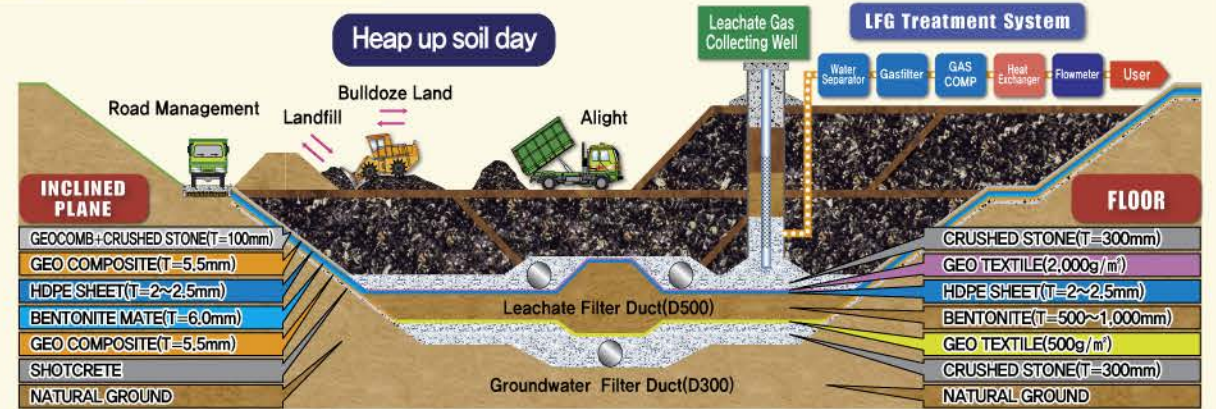
Deodorization Facility
Reception Hall Blocks Offensive Odor, Prevent Discharge Outside

Waste Water Treatment Facility
after treating waste water, Reuse it for industrial purpose or discharge it.

매립시설 Landfill Facility

Landfill Outline

- Landfill for Daily Wastes (1st phase):
 - area : 144,100m²
 - capacity : 2,480,000m³
- Landfill for Fly Ash :
 - area : 14,400m²
 - capacity : 135,000m³
- Landfill Process : semi-aerobic sanitary landfill (cell process)



Carry In Wastes Treatment Process

